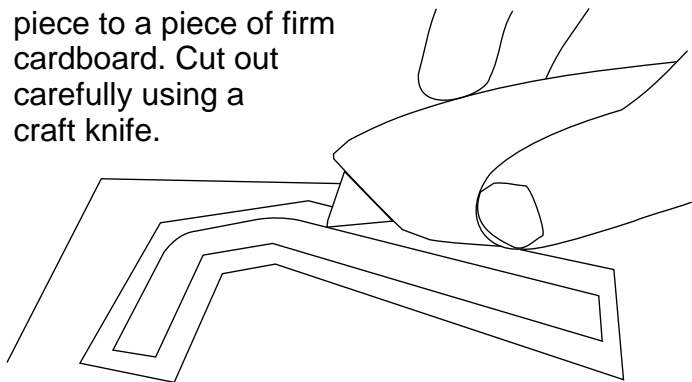
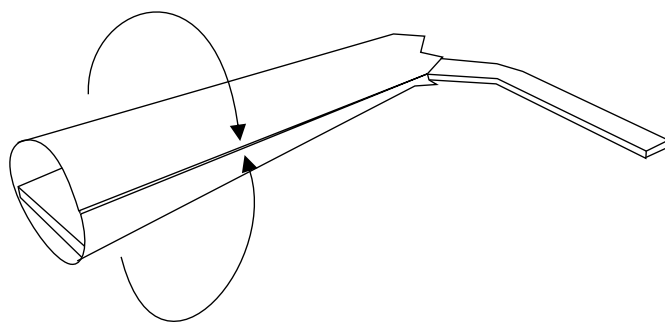


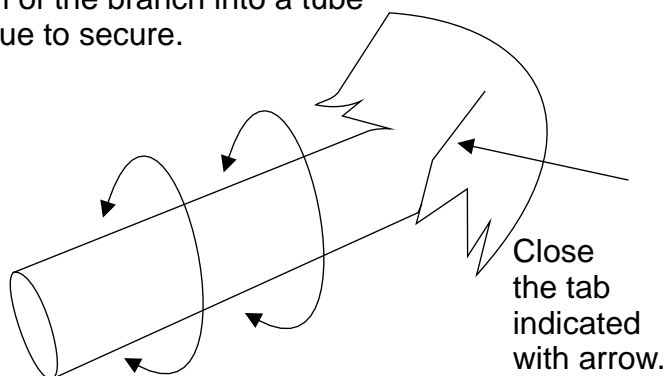
Glue the inner branch piece to a piece of firm cardboard. Cut out carefully using a craft knife.



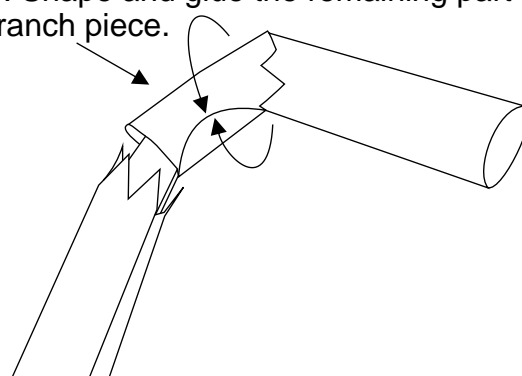
Shape the long part of the branch piece into a tube around the cardboard inner branch piece. Glue tube to secure it.



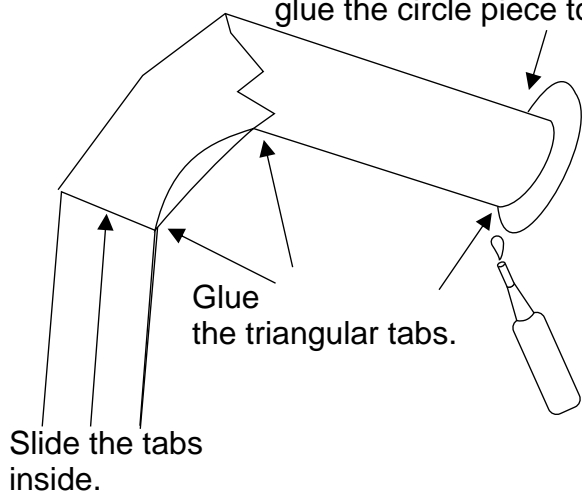
Shape the long part of the upper portion of the branch into a tube and glue to secure.



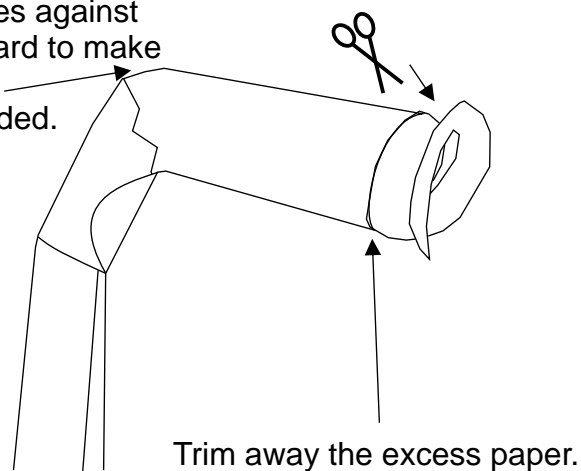
Slide the cardboard inner branch piece inside the tube. Shape and glue the remaining part of the upper branch piece.



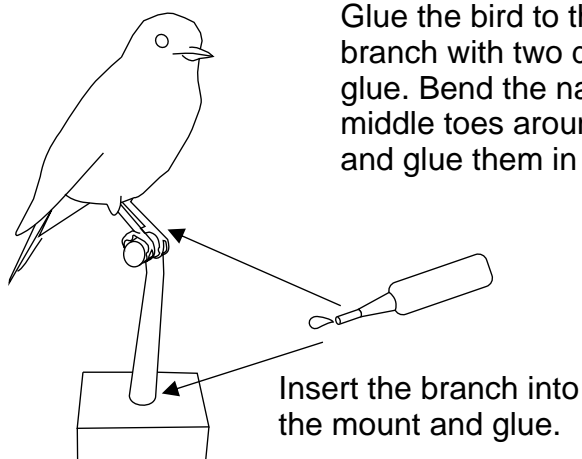
To close the end of the branch, glue the circle piece to the end.



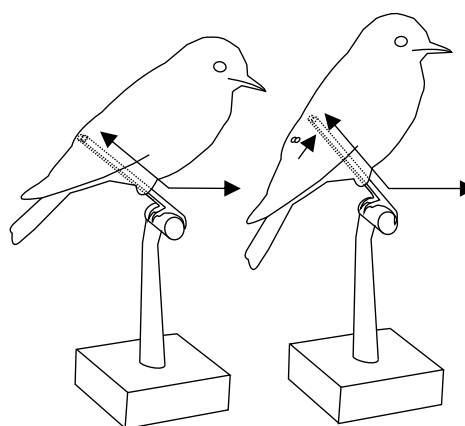
Press angles against the cardboard to make the angles more rounded.



Glue the bird to the branch with two drops of glue. Bend the nails of the middle toes around the branch and glue them in place.



Bluebird



To make the Bluebird sit more straight up, adjust the angle of the legs.